

CNNKS[®]

NETWORKING & COMMUNICATION

CONTACT US

CNNKS[®]

CIXI NKS ELECTRONICS CO., LTD

Add: Rooms 309-311, No.727 Suntang North Rd, Cixi, Zhejiang, China

Tel: 86-574-23711788 or 23711799

Fax: 86-574-23711777

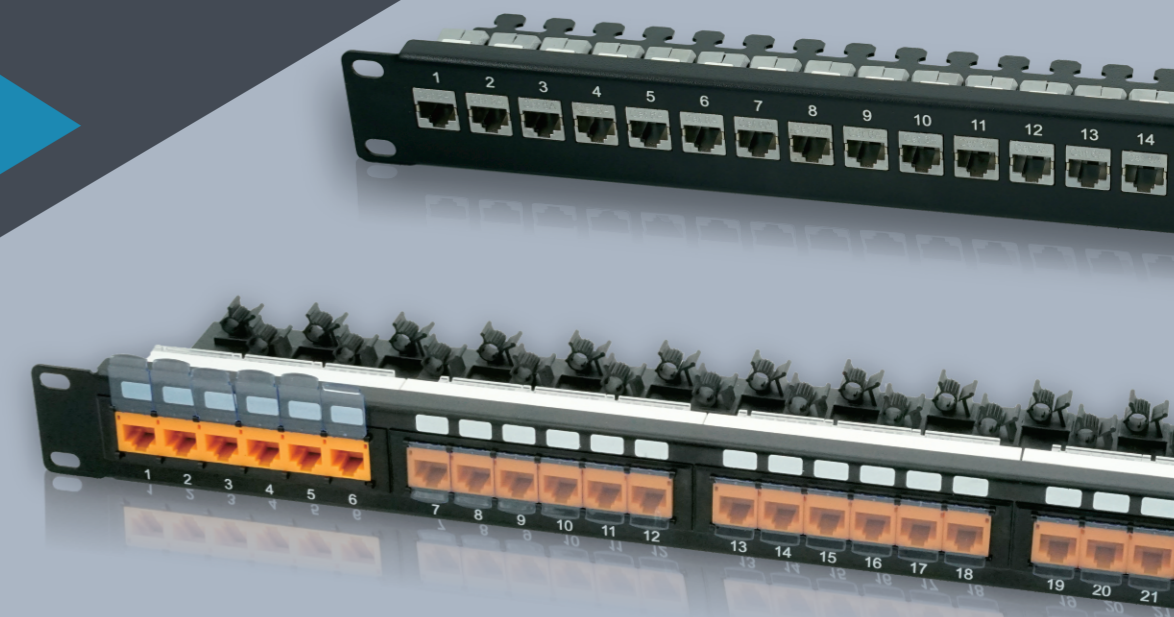
P.C.: 315300

Email: nks@cnnks.com

WWW.CNNKS.COM



www.cnnks.com



COOPERATION • DOUBLE WIN
CIXI NKS ELECTRONICS CO., LTD

BRIEF INTRODUCTION

Cixi NKS Electronic Co.,Ltd. Founded in March, 2005, is located in Cixi City which is a famous industrial city with good communication in the south of Hangzhou Bay, 20 kms from Shanghai-Hangzhou-Ningbo Expressway and 60 kms from Ningbo Port.

Our company is a Chinese famous network products manufacturer that specializes in the export of network products including *patch panels, modules, faceplates, network tools, switches, terminal blocks, jumping wires, fiber fittings etc.*

We always persevere in business policies that are high quality, competitive price and good service. Our products are relatively popular with and with good reputation in the overseas markets throughout Europe, USA, Asian and Middle East, etc.

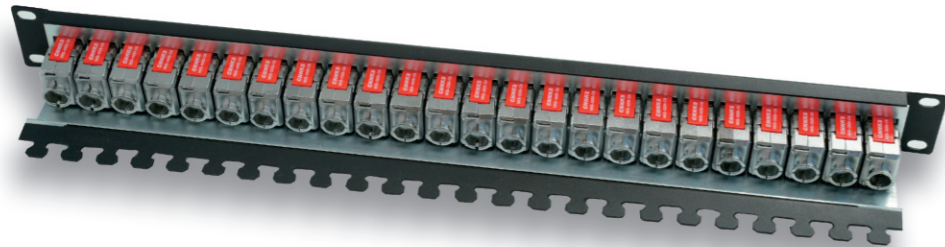
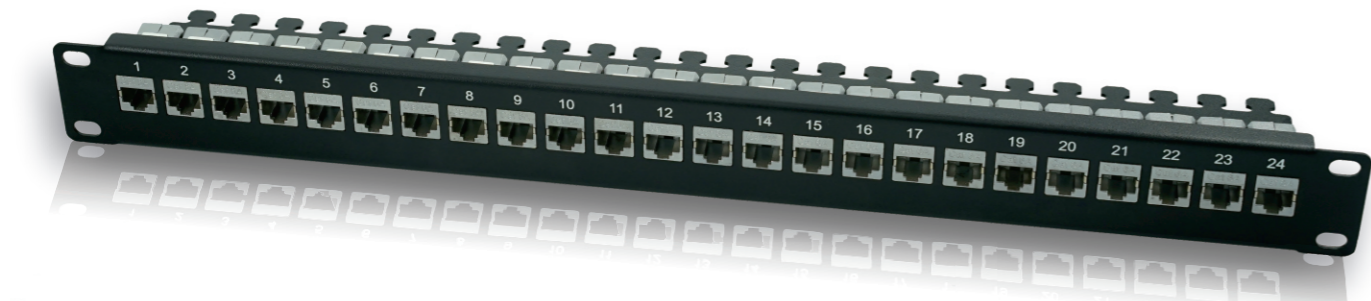
We hope you will choose our brand of competitively priced quality products and contact us for further details. Furthermore, We are also able to meet OEM order for overseas clients. We are willing to solve any problem you may have and establish good cooperation relationship with all friends over the world.



CONTENT

| | |
|---|--------------|
| 1.CAT 6A System | 1-8 |
| 1.1 CAT6A patch panel | 1-4 |
| 1.2 CAT6A keystone jack | 5-7 |
| 1.2 CAT6A FTP plug | 8 |
| 2.CAT 6 System | 9-13 |
| 2.1 CAT6 patch panel | 9-10 |
| 2.2 CAT6 keystone jack | 11-13 |
| 3.CAT 5E System | 14-18 |
| 3.1 CAT5e patch panel | 14-16 |
| 3.2 CAT5e keystone jack | 17-18 |
| 4.Faceplate | 19-20 |
| 5.Tools | 21-24 |
| 6.Cable test | 25 |
| 7.ONU Equipment Terminal Box | 26 |
| 8.Plastic Optical Fiber Cable Distribution Box | 27-28 |

PATCH PANEL
CAT.6A FTP 24-PORT



NKS-0102H-C6A



NKS-0227-C6A

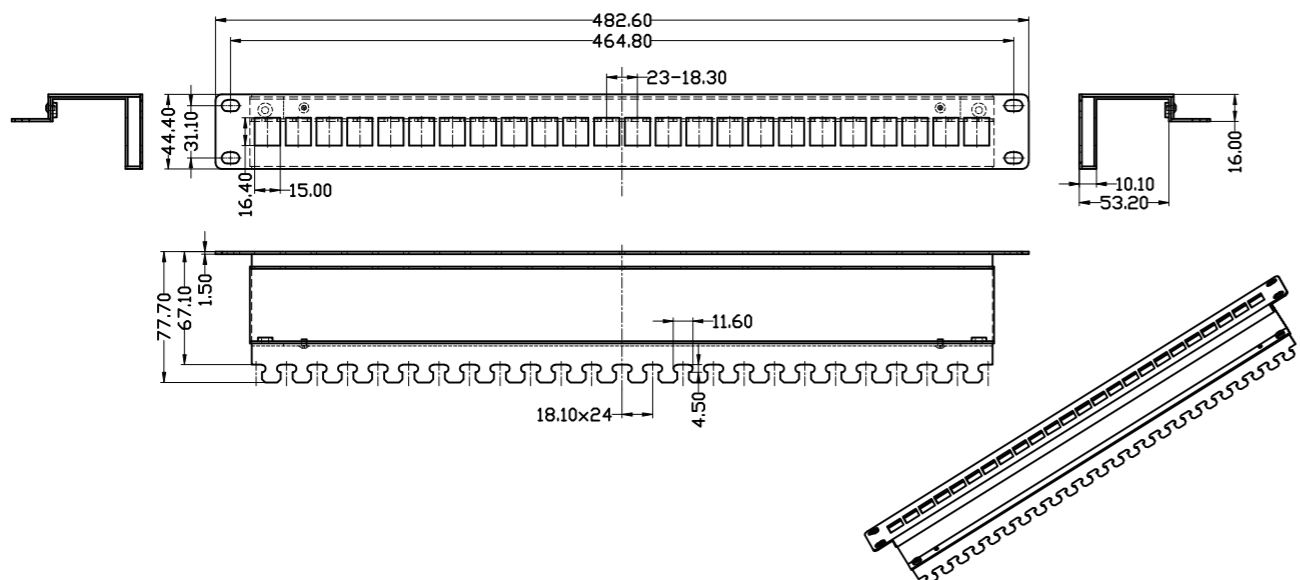


NKS-0225-C6A

Products Description

The shielded patch panel are loaded with shielded keystone jacks, which are housed in a closure full shielding metal enclosure designed to meet highest industry requirement. A shielded version is also available to maximum protection from EMI/RFI interference. By utilizing fully shielded jacks and connecting hardware, you can reduce the effects of interference on the network data transmissions.

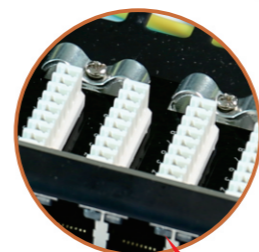
Graph Drawing



PATCH PANEL
CAT.6A FTP Krone IDC patch panel



NKS-0.5P-C6A



with LED light



NKS-LED-C6A



NKS-0109-C6A

Order Information

| Part Number | Description | Inner Box | Carton | Carton Measurement |
|--------------|----------------------------------|-----------|--------|--------------------|
| NKS-0.5P-C6A | CAT 6A FTP Krone IDC patch panel | 1PCS | 10PCS | L53*W29.5*H22.5 |
| NKS-LED-C6A | CAT 6A FTP Krone IDC patch panel | 1PCS | 10PCS | L53*W29.5*H22.5 |
| NKS-0109-C6A | CAT 6A FTP Krone IDC patch panel | 1PCS | 10PCS | L53*W29.5*H22.5 |

Unshielded Patch Panel

Loaded With Different CAT.6A Keystone Jack



NKS-0104K

MATCH WITH



NKS-0226-C6A



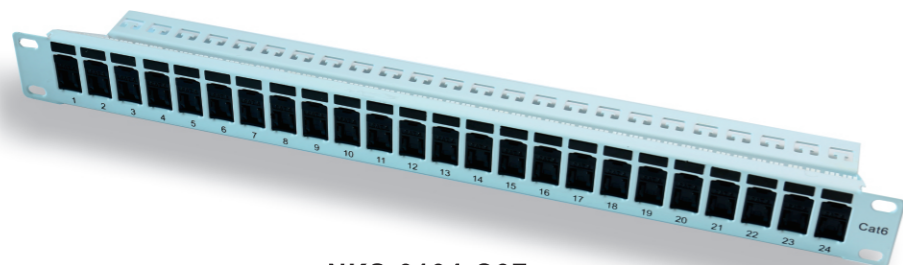
NKS-0209-C6A



NKS-0202-C6A

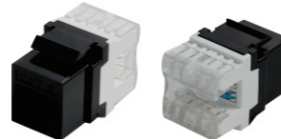
Order Information

| Part Number | Description | Inner Box | Carton | Carton Measurement |
|-------------|----------------------------------|-----------|--------|--------------------|
| NKS-0104K | Unloaded UTP 24 Port Patch Panel | 1PCS | 10PCS | L53*W29.5*H22.5 |



NKS-0104-C6F

MATCH WITH



NKS-0225-C6A

Order Information

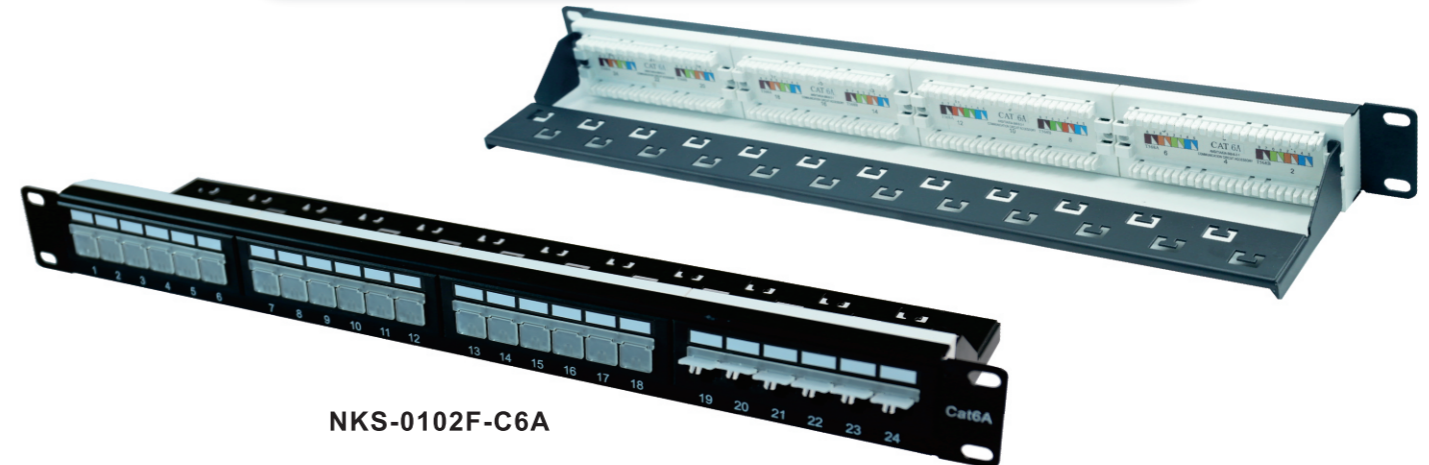
| Part Number | Description | Inner Box | Carton | Carton Measurement |
|--------------|--------------------------------|-----------|--------|--------------------|
| NKS-0104-C6F | CAT.6A UTP 24-PORT PATCH PANEL | 1PCS | 10PCS | L53*W29.5*H22.5 |

Products Description

The patch panel is a 19 inch rack mountable RJ45 jack panels, Each panel has cutouts that accept virtually all snap-in jacks, the kits includes the new icon labels with plastic holders that you mounted directly to an EIA standard 19 inch relay back or cabinets.

PATCH PANEL

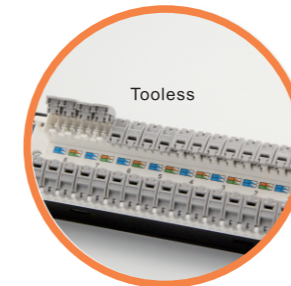
CAT.6A UTP 24-PORT



NKS-0102F-C6A

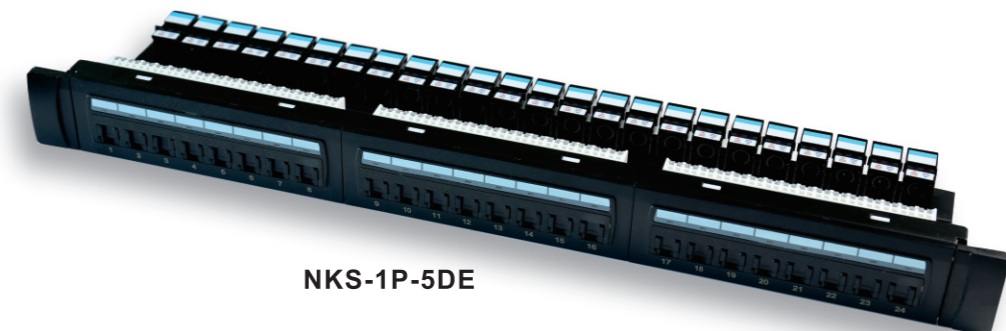
Products Description

The patch panel is a 19 inch rack mountable RJ45 jack panels. Each panel has cutouts that accept virtually all snap, in jacks, the kits includes the new icon labels with plastic holders that you mount on the front of the panel for easy port identification. Blank anodized panels can be mounted directly to an EIA standard 19 inch relay back or cabinets. Features and benefits design to mount to any standard 19" rack or cabinet.



Features and Benefits

- Design to mount to any standard 19" rack or cabinet
- Space saving, high-density 1U
- Black Electrostatic power-coated steel: phosphor bronze with tin plating over nickel.
- Use keystone jacks and keystone inserts to configure your panel to accommodate a variety of schemes
- Sturdy Aluminum Plate around RJ45 Jacks
- Phosphor bronze with 6-50 micro inches gold plated
- Available with T568A, T568B wiring pattern and meeting the requirement of CAT6 standard
- Termination accepts 22,24,26 AWG(0.64,0.5 and 0.4) solid wires



NKS-1P-5DE

**TOOLLESS
UTP keystone jack**



NKS-0226-C6A



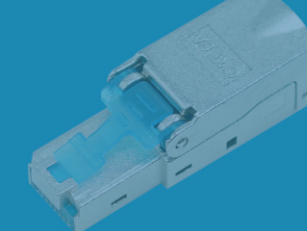
NKS-0224-C6A

Products Description

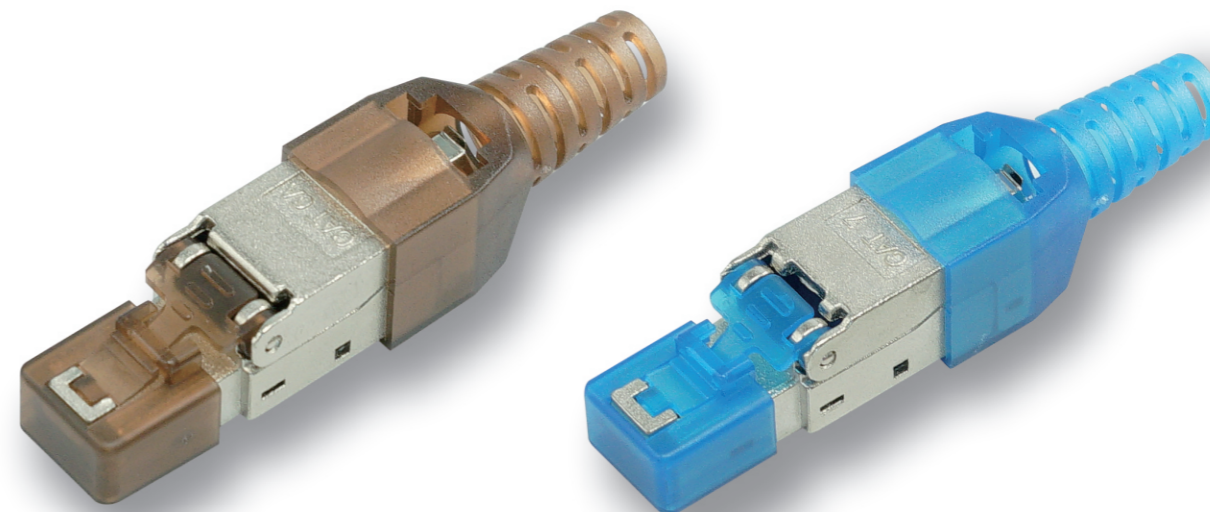
Horizontal style Cat6A 180 degree keystone Jacks, it features dual colour- coded wiring label with both T568A/B wiring pattern. Rear termination field for easy termination of a jack while installed in a wall plate, surface mount boxes, and blank patch panels for a wide variety of applications.

Order Information

| Part Number | Description | Inner Box | Carton | Carton Measurement |
|--------------|-----------------------------------|-----------|---------|--------------------|
| NKS-0226-C6A | CAT 6A UTP TOOLLESS KEYSTONE JACK | 50PCS | 1000PCS | L52*W30*H42.5 |
| NKS-0224-C6A | CAT 6A UTP TOOLLESS KEYSTONE JACK | 50PCS | 1000PCS | L52*W30*H42.5 |



CAT.6A FTP PLUG

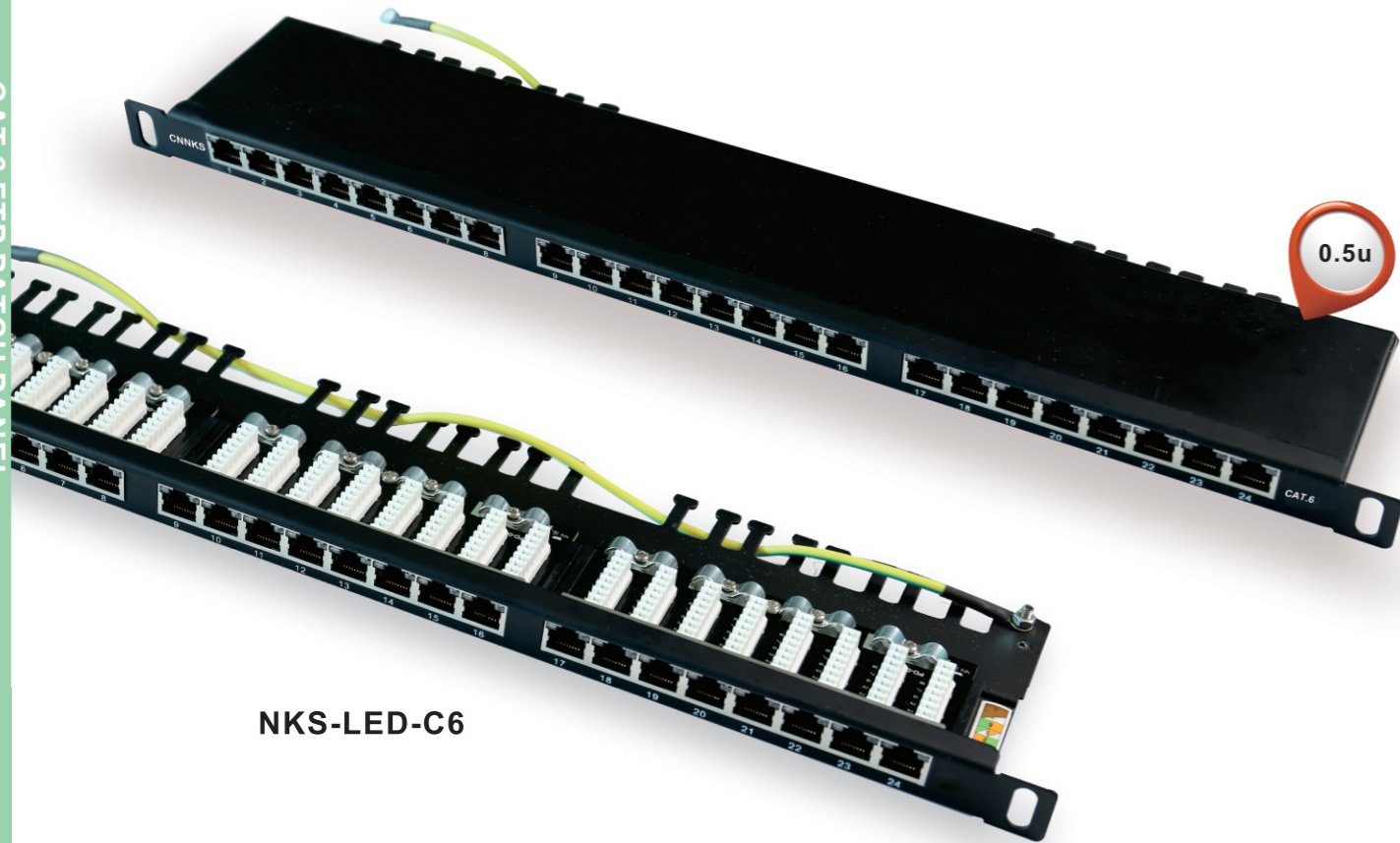


NKS-0228-C6A



Order Information

| Part Number | Description | Inner Box | Carton | Carton Measurement |
|--------------|-----------------|-----------|--------|--------------------|
| NKS-0228-C6A | CAT.6A FTP plug | 50PCS | 500PCS | L53*W29.5*H22.5 |



NKS-LED-C6

Technical Details

Electrical:

Current Rating:1.5Amps
 Insulation Resistance:500M ohms(Min)
 Contact Resistance:20m ohms(Max)
 DC Resistance:0.1 ohm MAX

Mechanical Specification:

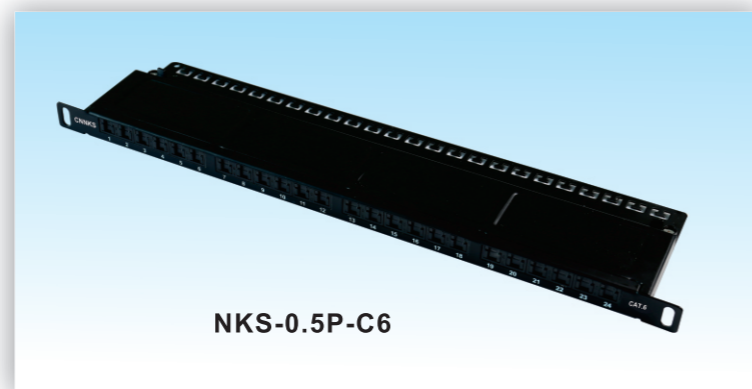
IDC Punch Down Cycle:>250 mating cycles
 Rj45 Insertion Life: >750mating cycles
 IDC Accept: 22-26 AWG Solid Wire

Material:

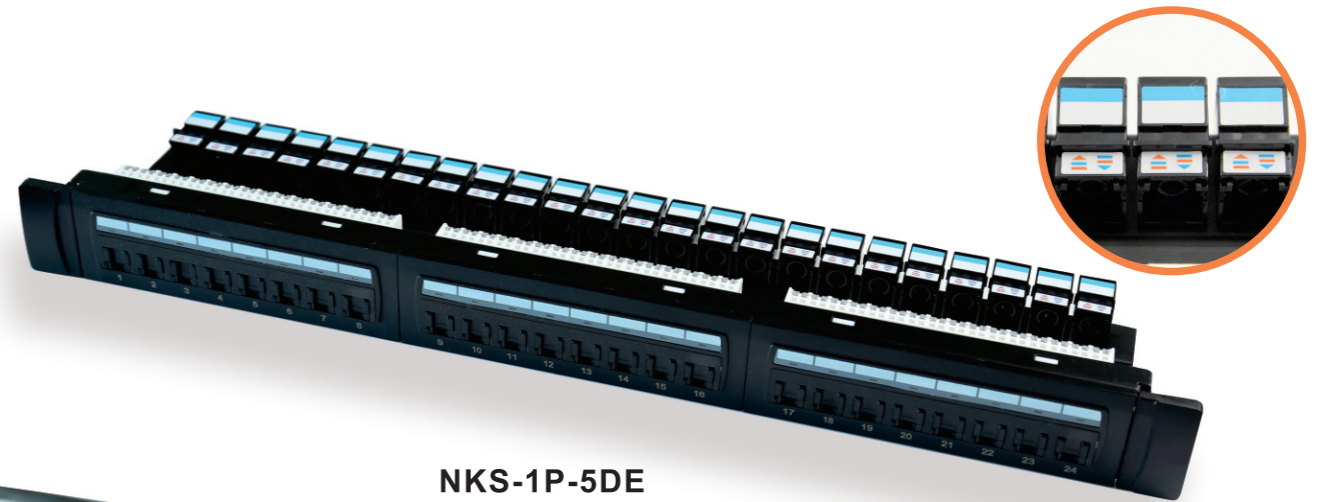
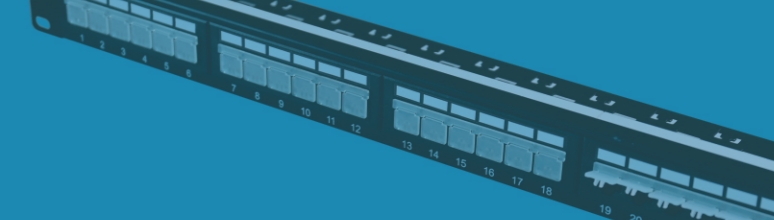
Panel: 1.5mm thickness metallic panel/RAL 9005
 Spring: Phosphor Bronze with gold-painted(3u"~50u") over nickel- painted.
 IDC Contact: Phosphor Bronze with Tin-painted
 Plastic: PC



NKS-0102H-C6



NKS-0.5P-C6



NKS-1P-5DE

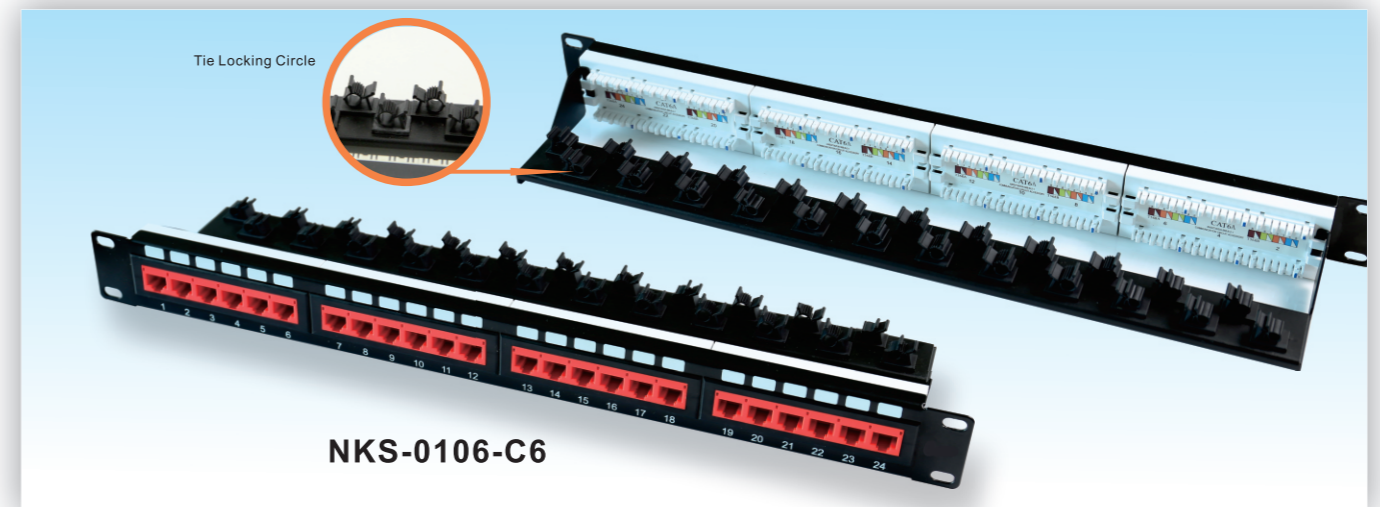
TOOLLESS

Products Description

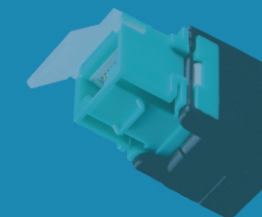
The patch panel is a 19 inch rack mountable Rj45 jack panels. Each panel has cutouts that accept virtually all snap, in jacks, the kits includes the new icon labels with plastic holders that you mount on the front of the panel for easy port identification. Blank anodized panels can be mounted directly to an EIA standard 19 inch relay back or cabinets. Features and benefits design to mount to any standard 19" rack or cabinet.

Features and Benefits

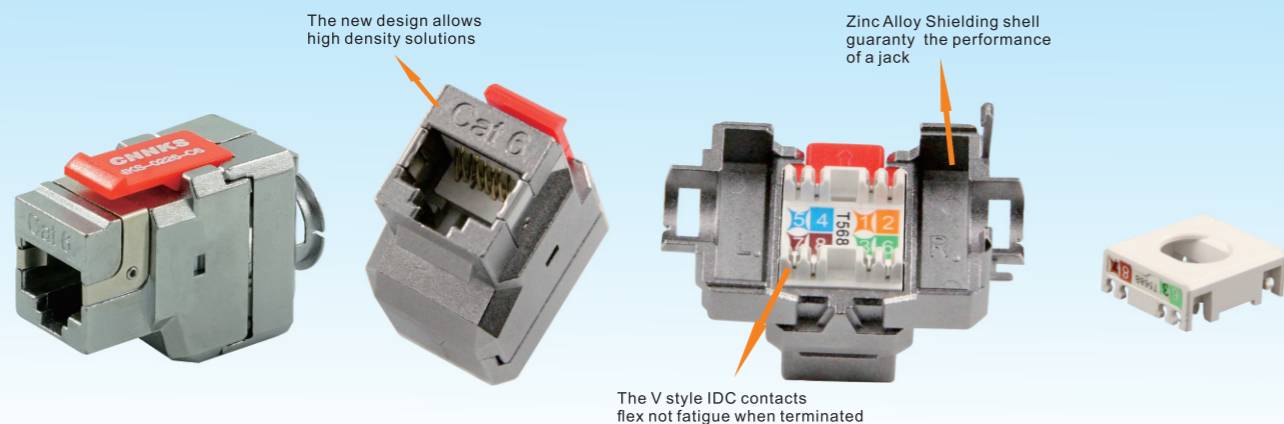
- Design to mount to any standard 19" rack or cabinet
- Space saving, high-density 1U
- Black Electrostatic power-coated steel: phosphor bronze with tin plating over nickel.
- Use keystone jacks and keystone inserts to configure your panel to accommodate a variety of schemes
- Sturdy Aluminum Plate around Rj45 Jacks
- Phosphor bronze with 6-50 micro inches gold plated
- Available with T568A, T568B wiring pattern and meeting the requirement of CAT6 standard
- Termination accepts 22,24,26 AWG(0.64,0.5 and 0.4)solid wires



NKS-0106-C6



CAT6. FTP SYSTEM PRODUCTS



The new design allows high density solutions

Zinc Alloy Shielding shell guaranty the performance of a jack

The V style IDC contacts flex not fatigue when terminated

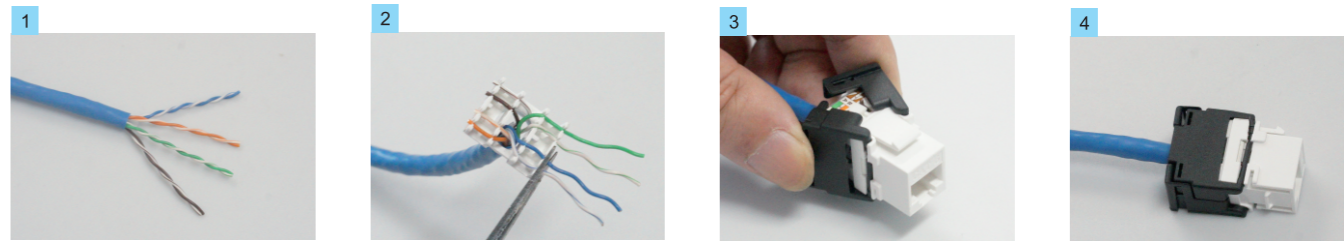
NKS-0225-C6



NKS-0224-C6

CAT6 UTP KEYSTONE JACK

Installment Instructions



Products Description

Horizontal style Cat6 180 degree keystone Jacks, it features dual colour- coded wiring label with both T568A/B wiring pattern. Rear termination field for easy termination of a jack while installed in a wall plate, surface mount boxes, and blank patch panels for a wide variety of applications.

Features and Benefits

- Available in Cat 6, T568A/B wiring, meet or exceed TIA/EIA Cat6 requirements
- Housing: high temperature thermoplastic
- Compact jack design, 8 positions and 8 conductors
- Contact: phosphor bronze, phosphor bronze with 6 to 50u" gold plate
- Accept 22-26 AWG solid with a insulation diameter of 0.4-0.6mm
- Easy to be terminated, low attenuation loss and high return loss
- High reliability and superior performance

Order Information

| Part Number | Description | Inner Box | Carton | Carton Measurement |
|-------------|---------------------------------|-----------|---------|--------------------|
| NKS-0224-C6 | CAT6 UTP TOOLLESS KEYSTONE JACK | 50PCS | 1000PCS | L52*W30*H42.5 |

Features and Benefits

- Available in Cat 6, T568A/B wiring, meet or exceed TIA/EIA Cat6 requirements
- Shielding protects against EMI/RFI interference
- Housing: high temperature thermoplastic
- Compact jack design, 8 positions and 8 conductors
- Contact: phosphor bronze, phosphor bronze with 6 to 50u" gold plate
- Accept 22-26 AWG solid with a insulation diameter of 0.4-0.6mm
- Easy to be terminated, low attenuation loss and high return loss
- High reliability and superior performance



NKS-0227-C6



NKS-0209P-C6



NKS-0225-C6-S



NKS-0226-C6



NKS-0202-C6



NKS-0209-C6



NKS-PD006-C6

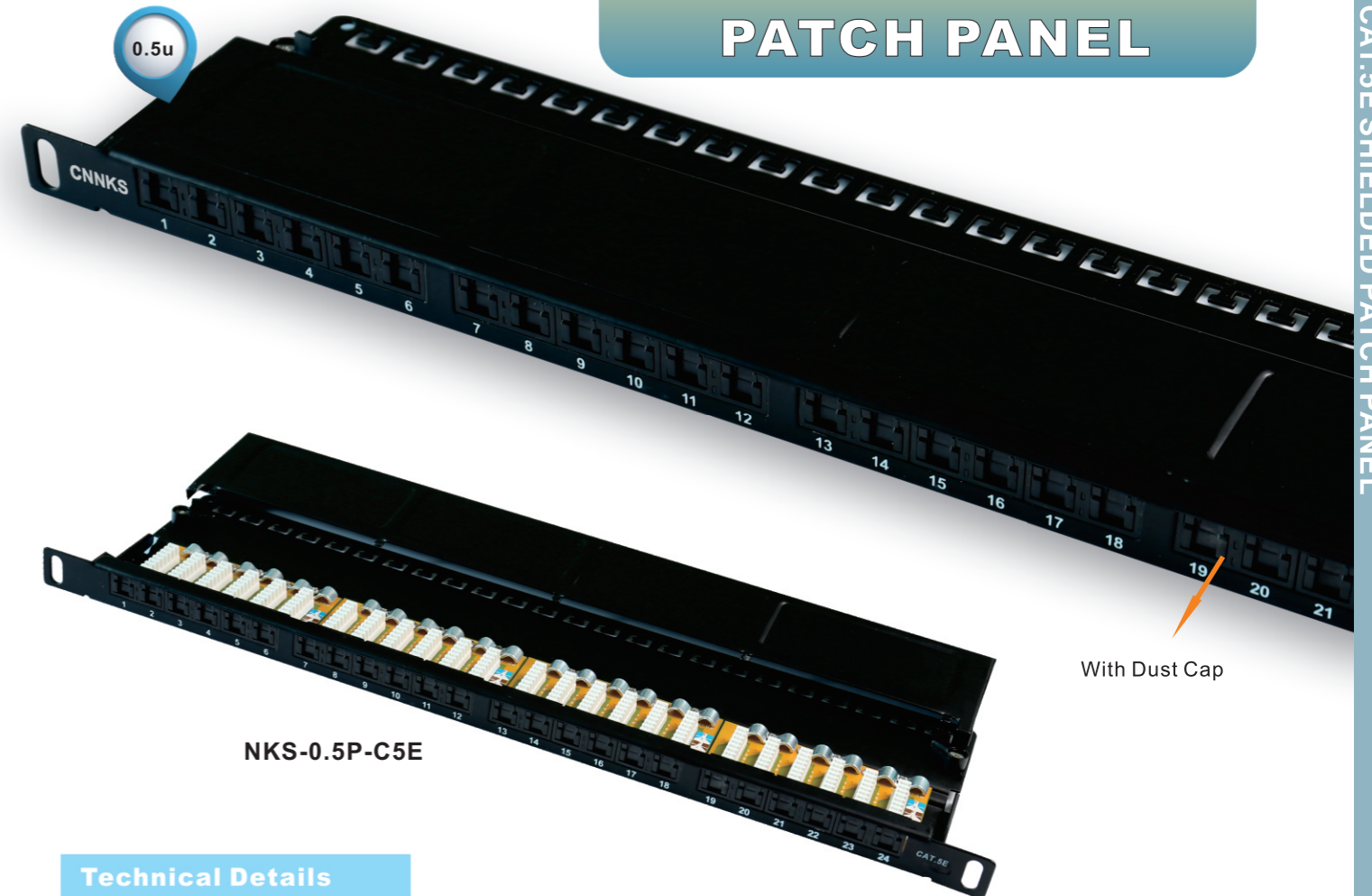


NKS-0202-ZT-C6

Order Information

| Part Number | Description | Inner Box | Carton | Carton Measurement |
|----------------|-------------------|-----------|---------|--------------------|
| NKS-0226-C6 | UTP KEYSTONE JACK | 50PCS | 1000PCS | L52*W30*H42.5 |
| NKS-0202-C6 | UTP KEYSTONE JACK | 50PCS | 1000PCS | L52*W30*H42.5 |
| NKS-0209-C6 | UTP KEYSTONE JACK | 50PCS | 1000PCS | L52*W30*H42.5 |
| NKS-PD006-C6 | UTP KEYSTONE JACK | 50PCS | 1000PCS | L52*W30*H42.5 |
| NKS-0202-ZT-C6 | UTP KEYSTONE JACK | 50PCS | 1000PCS | L52*W30*H42.5 |

**CAT. 5E
PATCH PANEL**



NKS-0.5P-C5E

With Dust Cap

Technical Details

Electrical:

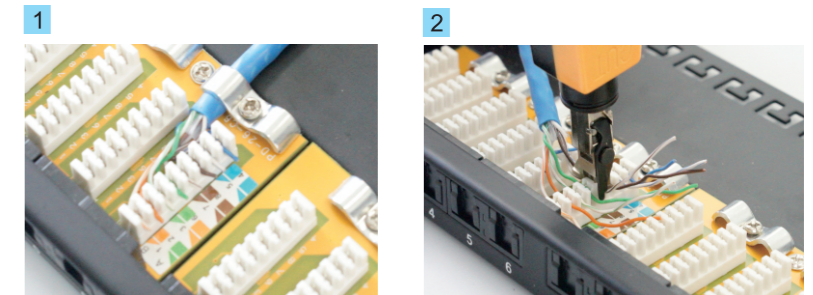
Current Rating:1.5Amps
Insulation Resistance:500M ohms(Min)
Contact Resistance:20m ohms(Max)
DC Resistance:0.1 ohm MAX

Mechanical Specification:

IDC Punch Down Cycle:>250 mating cycles
Rj45 Insertion Life:>750mating cycles
IDC Accept: 22-26 AWG Solid Wire

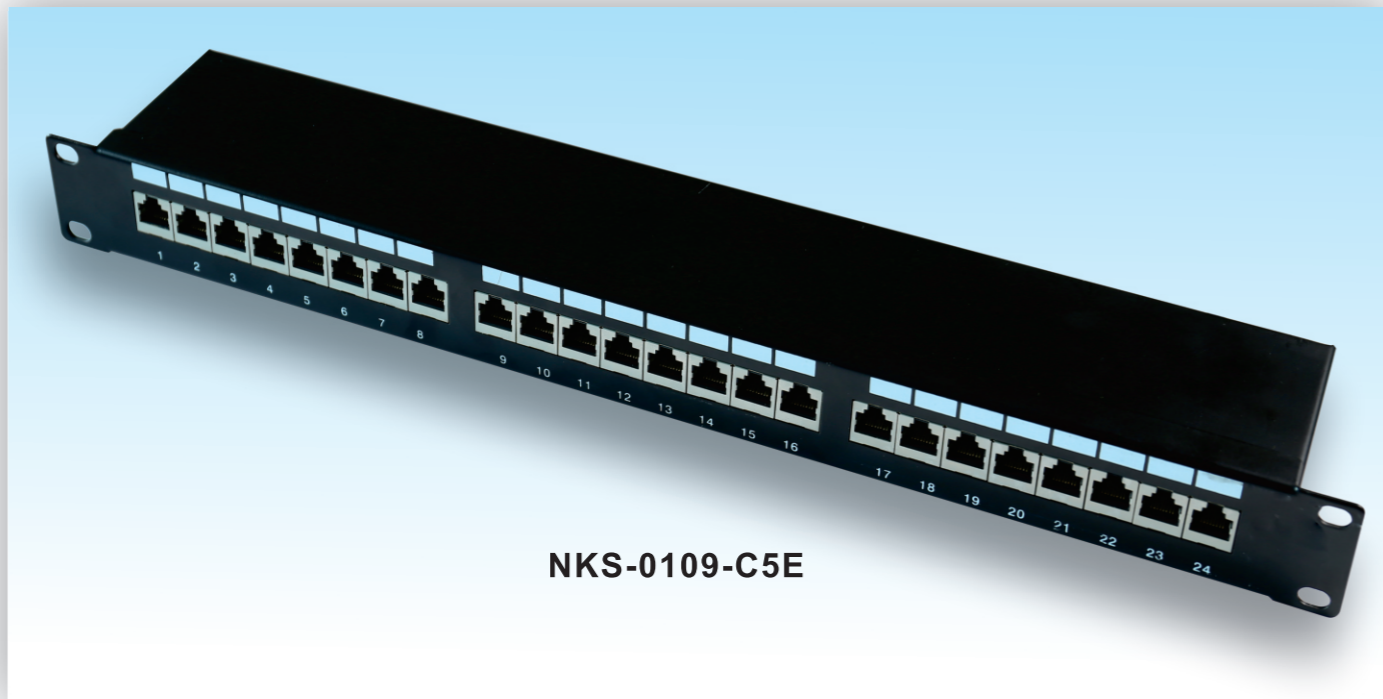
Material:

Panel: 1.5mm thickness metallic panel/RAL 9005
Spring: Phosphor Bronze with gold-painted(3u"~50u") over nickel- painted.
IDC Contact: Phosphor Bronze with Tin-painted
Plastic: PC



Order Information

| Part Number | Description | Inner Box | Carton | Carton Measurement |
|--------------|---------------------------------|-----------|--------|--------------------|
| NKS-0.5P-C5E | CAT5E FTP Krone IDC patch panel | 1PCS | 10PCS | L53*W29.5*H22.5 |



NKS-0109-C5E

Technical Details

Electrical:

Current Rating: 1.5Amps
 Insulation Resistance: 500M ohms (Min)
 Contact Resistance: 20m ohms (Max)
 DC Resistance: 0.1 ohm MAX

Mechanical Specification:

IDC Punch Down Cycle: >250 mating cycles
 Rj45 Insertion Life: >750 mating cycles
 IDC Accept: 22-26 AWG Solid Wire

Material:

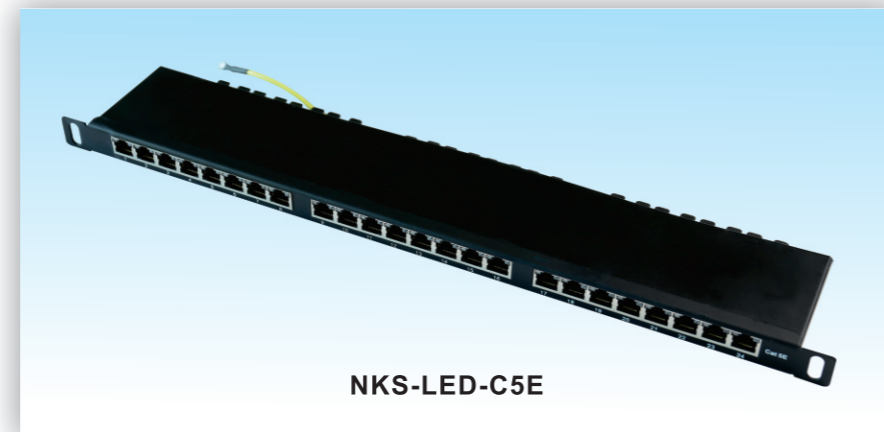
Panel: 1.5mm thickness metallic panel/RAL 9005
 Spring: Phosphor Bronze with gold-painted (3u"~50u") over nickel-painted.
 IDC Contact: Phosphor Bronze with Tin-painted
 Plastic: PC

Products Description

The shielded patch panel are loaded with shielded keystone jacks, which are housed in a closure full shielding metal enclosure designed to meet highest industry requirement. A shielded version is also available to maximum protection from EMI/RFI interference. By utilizing fully shielded jacks and connecting hardware, you can reduce the effects of interference on the network data transmissions.



NKS-0102H-C5E

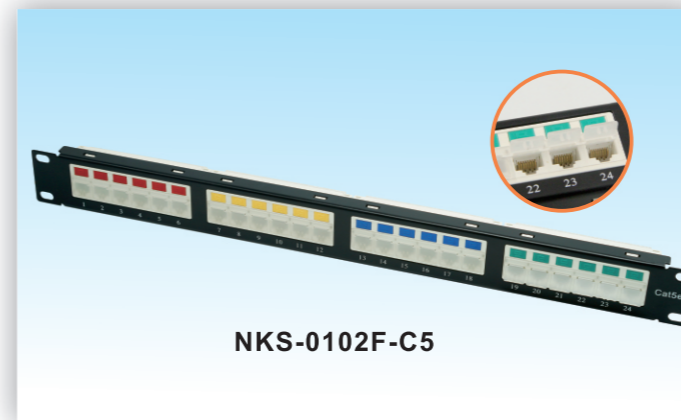


NKS-LED-C5E

**CAT. 5E UTP 24-PORT
 PATCH PANEL**



NKS-0104K-C5E



NKS-0102F-C5



NKS-0407A

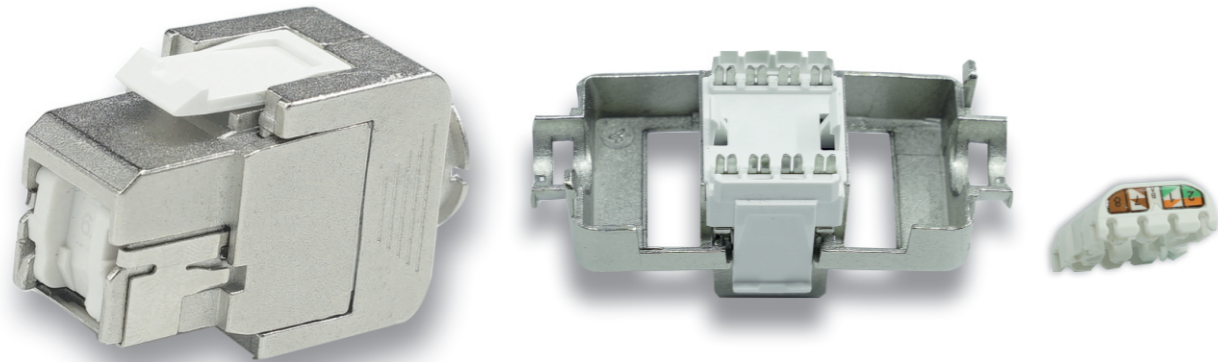


NKS-0404



NKS-0407

CAT5E. FTP KEYSTONE JACK



NKS-0227-C5E

Products Description

The new style Jack provides Category 5e system performance and userfriendly installation features. A shielded is available to maximum protection from EMI/RFI interference, the compact size provides high density connectivity in the work area and telecommunications room.

Features and Benefits

- Available in Cat 5E, T568A/B wiring, meet or exceed TIA/EIA Cat5e requirements
- Shielding protects against EMI/RFI interference
- Housing: high temperature thermoplastic
- Compact jack design, 8 positions and 8 conductors
- Contact: phosphor bronze, phosphor bronze with 6 to 50u" gold plate
- Accept 22-26 AWG solid with a insulation diameter of 0.4-0.6mm
- Easy to be terminated, low attenuation loss and high return loss
- High reliability and superior performance

Order Information

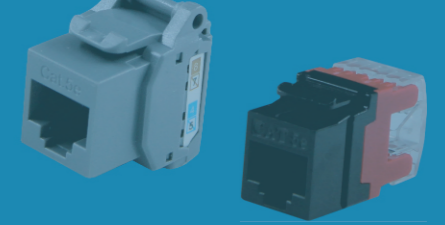
| Part Number | Description | Inner Box | Carton | Carton Measurement |
|----------------|-------------------|-----------|--------|--------------------|
| NKS-0227-C5E | FTP keystone jack | 50PCS | 300PCS | L53*W29.5*H22.5 |
| NKS-0227W-C5E | FTP keystone jack | 50PCS | 300PCS | L53*W29.5*H22.5 |
| NKS-0225-C5E-S | FTP keystone jack | 50PCS | 300PCS | L53*W29.5*H22.5 |



NKS-0227W-C5E



NKS-0225-C5E-S



CAT5E. UTP KEYSTONE JACK



NKS-0202-C5E



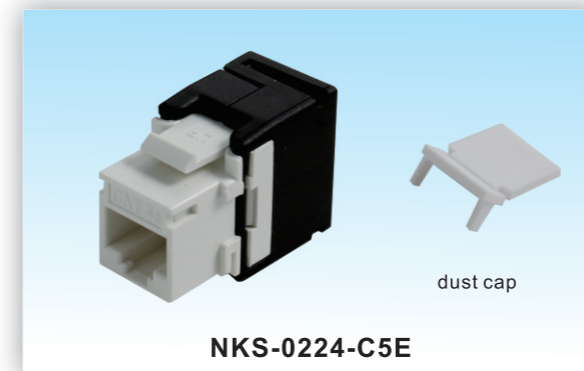
NKS-PD-005



NKS-966



NKS-988



NKS-0224-C5E



NKS-0226-C5E



NKS-0204-C5E



NKS-0204-C3E

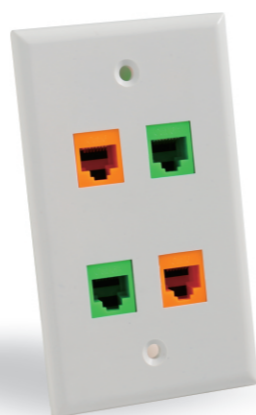
FACEPLATE



NKS-0313-1



NKS-0313-2



NKS-0313-4



NKS-0219



NKS-0220



NKS-0313-0222



NKS-0310

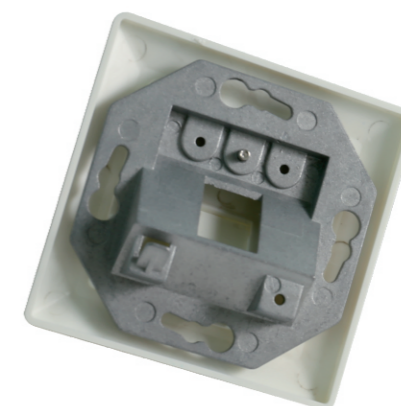


NKS-0309

FTP FACEPLATE GERMANY TYPE



NKS-0113-1P



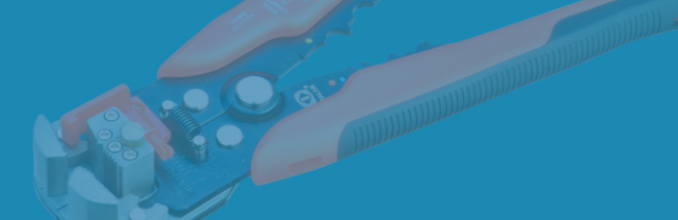
| Part Number | Description | Outer Dimension(L*W)(MM) | Inner Dimension(L*W)(MM) |
|-------------|------------------------|--------------------------|--------------------------|
| NKS-0113-1P | FTP FACEPLATE ONE PORT | 80*80 | 50*50 |



NKS-0113-2P



| Part Number | Description | Outer Dimension(L*W)(MM) | Inner Dimension(L*W)(MM) |
|-------------|------------------------|--------------------------|--------------------------|
| NKS-0113-2P | FTP FACEPLATE TWO PORT | 80*80 | 50*50 |



TOOLS



NKS-0903X

Products Description

The 110 single-pair impact tool is designed to seat 110 connecting blocks and terminate and cut cable on 110 wiring blocks. Saving time and money, the tool features an easy way to hold, ergonomically designed handle that helps reduce fatigue when trimming wire or seating connection blocks to the wiring base.



NKS-316K NKS-317B NKS-110 NKS-66 NKS-110&66



NKS-0907



NKS-0902



NKS-3686



NKS-200A
8P8C/6P6C/4P4C



NKS-86



NKS-268



NKS-9140
5.9" (150mm)



NKS-3240



NKS-8086R
8P8C/6P6C



NKS-766
8.2"(210MM)



TOOLS

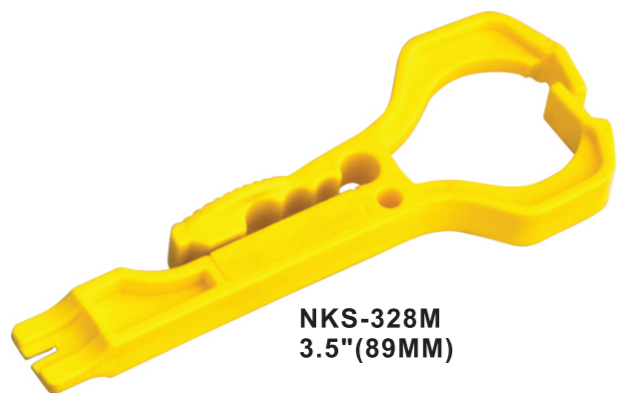
Adjustable Knob



NKS-S501B
4.8"(122MM)



NKS-322
4.3"(108MM)



NKS-328M
3.5"(89MM)



NKS-501E
5.4"(137MM)



NKS-7501A
5"(127MM)



NKS-352
4.9"(125MM)



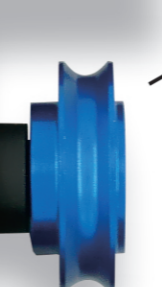
TOOLS

ARMORED CABLE SLITTING TOOLS

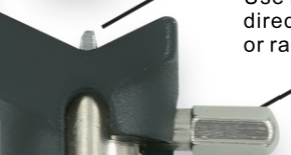
Cable Guide Wheel Adjustment Knob



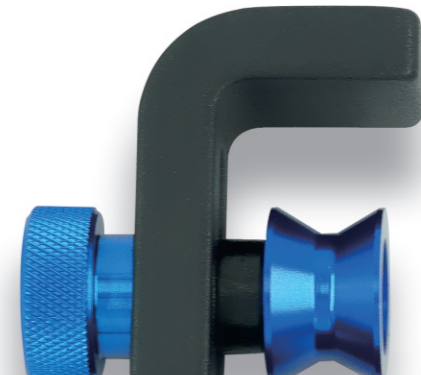
Cable Guide Wheel



Precision Ground Blade



Use to change blade direction for longitudinal or radial cuts



Blade Depth Screw to adjust blade depth



Extend & retract blade with knob

NKS-118



NKS-10

Products Description

The NKS-118 and NKS-10 are designed to gain mid span access by slitting open jacketed and jacket&armored fiber optic cables. The tools have an adjustable depth precision made blade that will cut through the toughest material while insuring no damage to the fibers. The tools can be set for Longitudinal cuts as well as radial cuts.

Instructions For Use

Prior to use check the cable and know its construction. Some cables have strength members in the center of the cable and others have the strength member in the outer jacket of the cable or have a "lay" on the outside of the jacket. If your cable has an external strength member or a strength member in the jacket of the cable you need to use care when working with this cable otherwise you run the risk of damaging the blade.

Setting the blade depth: To set the blade depth it is recommended to have a sample piece of cable to use for reference and testing. On the bottom of the black knurled knob is a set screw. This set screw adjusts the blade depth. Each mark on the bottom of the knurled knob represents approximately 0.040" of blade height adjustment. Counter clockwise rotation of the set screw increases the blade height while clockwise rotation reduces the blade height.

CABLE TESTER



NKS-8102



NKS-8108



NKS-648



NKS-628



NKS-2468



NKS-228



NKS-828



NKS-522



NKS-OTB01

Dimensions

| | |
|--------------|---------------|
| Wall-mounted | 295*240*110mm |
| Built-in | 330*280*125mm |



NKS-OTB02

Dimensions

| | |
|--------------|--------------|
| Wall-mounted | 375*325*30mm |
| Built-in | 320*280*30mm |



NKS-OTB03

Dimensions

| | |
|--------------|--------------|
| Wall-mounted | 425*325*30mm |
| Built-in | 370*280*30mm |



NKS-OTB04

Dimensions

| | |
|--------------|--------------|
| Wall-mounted | 330*280*25mm |
| Built-in | 300*260*25mm |



NKS-OTB05

Dimensions

| | |
|--------------|--------------|
| Wall-mounted | 485*335*20mm |
| Built-in | 450*300*20mm |

Products Description

ONU terminal box is specialized for FTTH. Mainly used for household, commercial, office building, villas, internet bar and other users. The products can be applied to unfold install wiring and concealed installation wiring for indoor distribution. Can meet different manufacturers' requirements for various types FTTH terminal mounting.

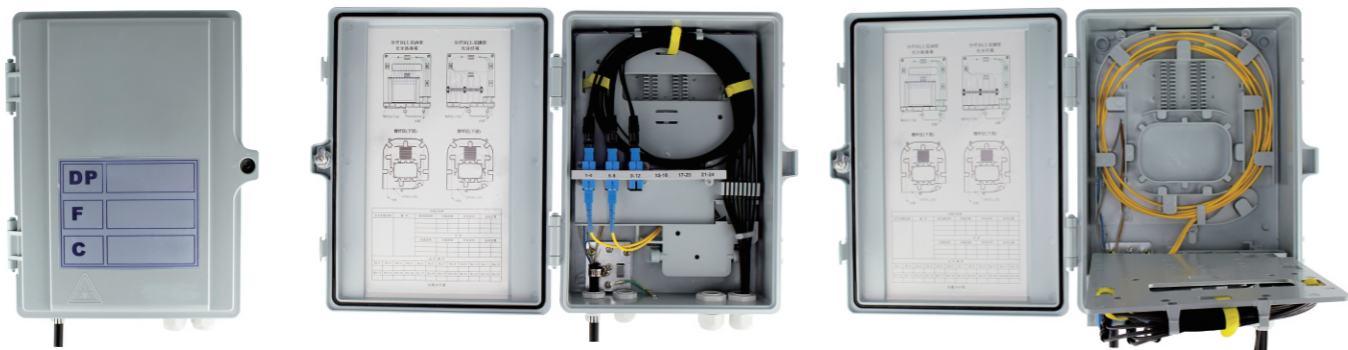
Features and Benefits

- Terminal box body adopts two kinds of materials including Sheet Moulding Compound(SMC) and Sheet Metal.
- It has compact construction, light weight, reasonable layout, mechanical design.
- The panel is made of ABS frame retardant material appearance, beautiful and delicate. Life of more than 20years.
- This product has the function of indoor optical cable and rubber-insulated fiber bringing in.



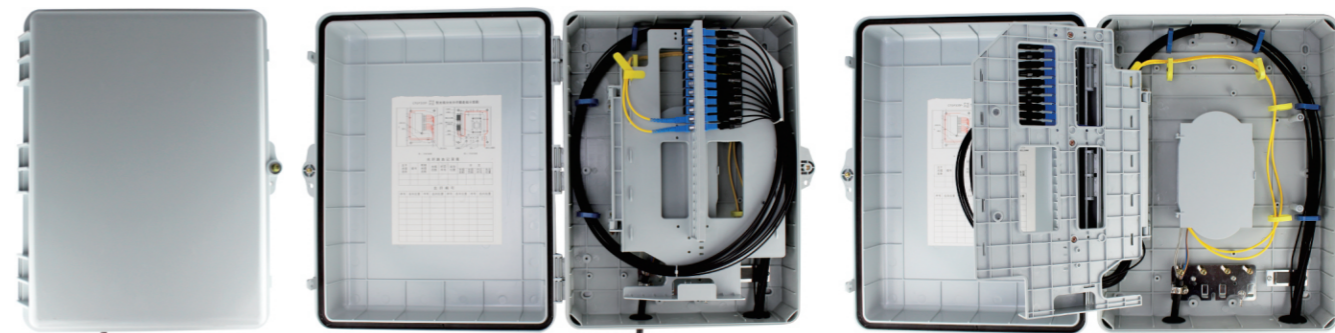
PLASTIC OPTICAL FIBER CABLE DISTRIBUTION BOX

PLASTIC OPTICAL FIBER CABLE DISTRIBUTION BOX



NKS-GF0124-01

| | |
|------------|--------------|
| Dimensions | 310*240*90mm |
| Capacity | 24 cores |



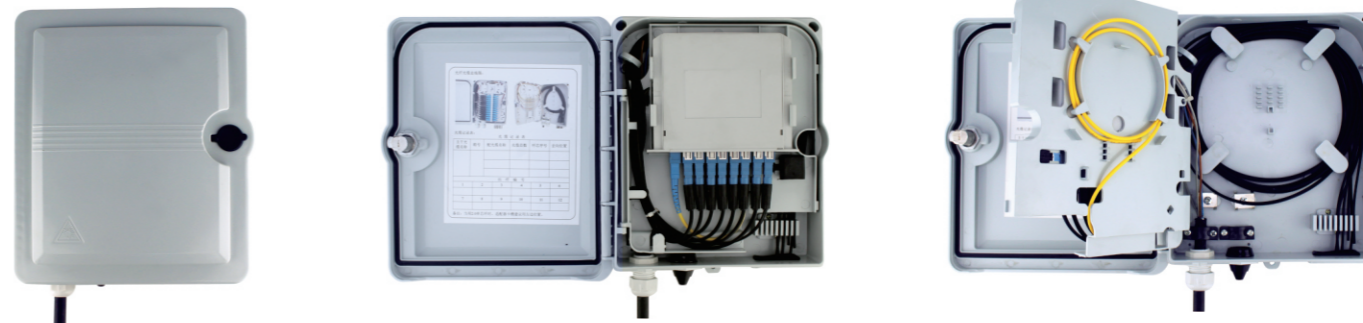
NKS-GF0148-01

| | |
|------------|---------------|
| Dimensions | 420*320*140mm |
| Capacity | 48 cores |



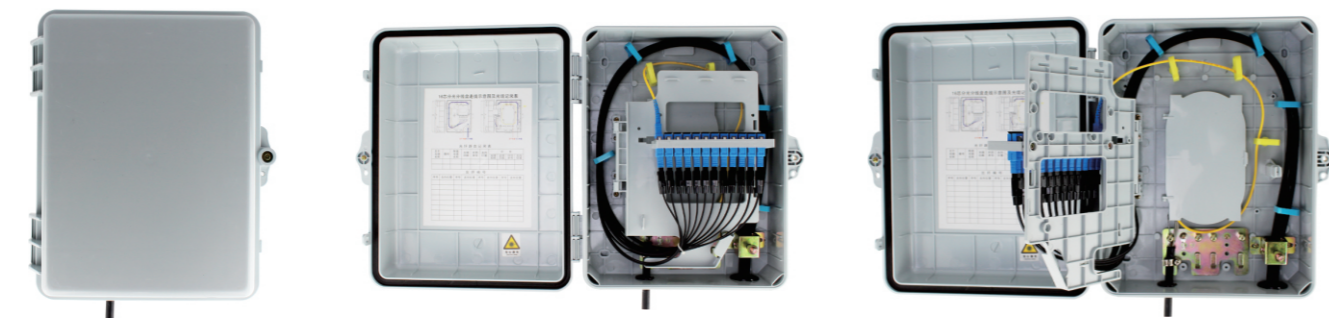
NKS-GF0124-02

| | |
|------------|--------------|
| Dimensions | 330*250*90mm |
| Capacity | 24 cores |



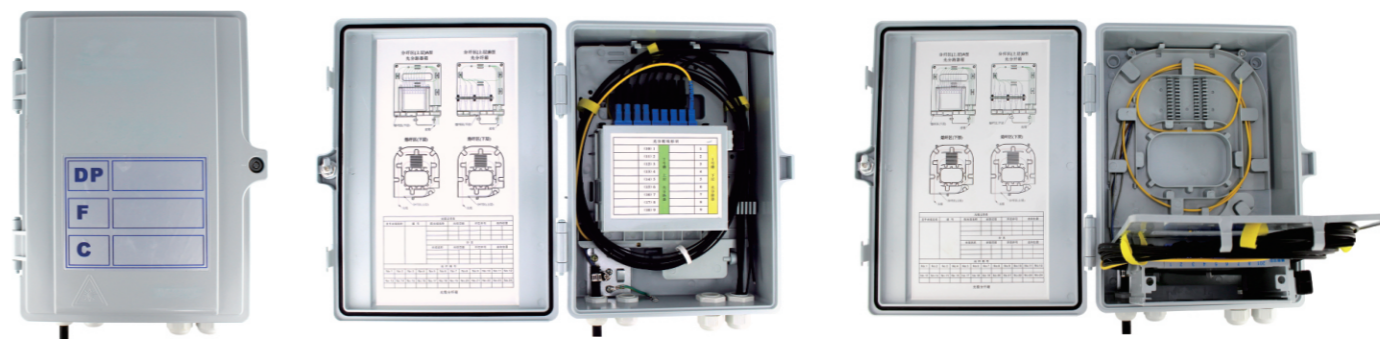
NKS-GF0108-01

| | |
|------------|--------------|
| Dimensions | 225*200*65mm |
| Capacity | 8 cores |



NKS-GF0124-04

| | |
|------------|---------------|
| Dimensions | 330*260*130mm |
| Capacity | 24 cores |



NKS-GF0116-01

| | |
|------------|--------------|
| Dimensions | 310*240*90mm |
| Capacity | 16 cores |